

INTRODUCING

# Hippo ThermalAlert™ for COVID-19



## Keep Your Workplace Open and Safe

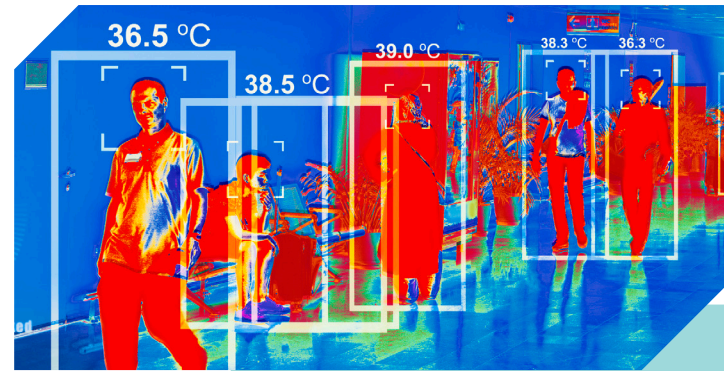
As businesses and organizations transition to a new normal due to COVID-19, safety has become paramount. Where there are high concentrations of people — hospitals, office buildings, schools, shopping malls, airports and train stations, for example — new steps must be put in place like temperature monitoring to keep people safe. Identifying those with elevated body temperatures before they enter a building enables them to be redirected to a different entrance or isolated from the general population.

Unfortunately, most available temperature monitoring solutions require manual intervention and are typically limited to one person being checked at a time. Not only does this create long lines and delays, the close contact that occurs during human-to-human temperature screening increases the risk of exposure for both parties.

Fortunately, there's Hippo ThermalAlert™ — a smart imaging system that supports automated, accurate mass temperature screening. Setup options include stand-alone, central or drive-through detection modes and include the ability to connect to an existing network. Best of all, Hippo ThermalAlert™ can be up and running as a stand-alone solution in just 48 hours.

### Identify Individuals with Fevers Prior to Building Entry

Hippo ThermalAlert™ is a dual spectrum thermal imaging solution that delivers continuous, real-time, no-contact temperature monitoring. It is able to measure human body temperature [between 86°F to 113°F] of up to six people simultaneously within the temperature detection zone from a distance of up to 20 feet. This far surpasses other available solutions which typically can only detect human temperatures from a distance of 1-6 feet.



Hippo ThermalAlert is a dual spectrum thermal imaging solution that delivers continuous, real-time, no-contact temperature monitoring.

## PROVEN. SECURE. COMPLIANT.

- Hippo ThermalAlert™ is currently deployed at retail, commercial healthcare, and transportation facilities nationwide, as well as events and entertainment sites
- The system is currently live at a Military Treatment Facility (MTF) and is being deployed to 16 additional U.S. military hospitals due to its superior performance
- Security is assured with device-to-device 256 bit AES encryption as standard
- The system has Authority to Operate (ATO) at U.S. Department of Defense and Department of Veterans Affairs (VA) facilities
- Defense Health Agency (DHA) approval has been secured for governmental cloud deployment enabling prescreening and virtual care for COVID-19
- Hippo Virtual Care is HIPAA, FedRAMP, FISMA, GDPR, PHIPA, and PIPEDA compliant



If a high temperature is detected, SMS, email and/or single/multi-camera smart alerts are sent to individuals and care teams via monitors, mobile devices or the Internet. With a detection time of less than one second and accuracy of  $\leq \pm 0.5^\circ\text{F}$ , it's now possible to identify individuals with a fever before they enter your facility so you can keep your workplace open while protecting both employees and visitors.

### Flexible Deployment Options

Hippo ThermalAlert™ can be deployed as a stand-alone system or upgraded for enterprisewide or multi-site integration as an IoT platform with secure messaging and secure collaboration. Common deployments include:

- Primary access monitoring to manage the flow of people at the primary entrance door of a facility [typical order is two units per main door]
- Secondary access monitoring to monitor the flow within a facility [4-8 units to monitor single, low volume entryways or with a single control room monitoring all cameras]
- Drive-through clinics and tents using four cameras; images can be managed on a single iPad or tablet

### Advanced Thermal Camera

ThermalAlert includes a high-resolution [1920 x1080 pixels] thermal camera and visual light. Our proprietary camera calibration software ensures accuracy and helps identify people at higher risk for infection based on a configurable range of temperature readings.

### Customizable Dashboard for Real-Time Monitoring

Hippo ThermalAlert™ includes a customizable dashboard that displays optical and thermal images, as well as body temperatures. From the dashboard, users can monitor images and send alerts to care teams.



Hippo ThermalAlert™



## Case Study | CarePoint Health

### Client

A New Jersey-based healthcare provider operating three facilities: Bayonne Medical Center, Christ Hospital in Jersey City, and Hoboken University Medical Center.

### Approach

Deploy 12 Hippo ThermalAlert imaging cameras in a stand-alone configuration, divided equally among the three facilities.

### Results

Hippo ThermalAlert has created a safer environment for employees and visitors, enabling the hospitals to resume scheduling elective surgeries.

**Temperature scanning systems provide fast and reliable results on easy-to-read digital screens and allow us to triage every visitor and employee who enters our facilities, creating another layer of safety for our patients and staff.”**

**Vijay Singh** | Chief Hospital Executive, Bayonne Medical Center

### About Hippo

Hippo Technologies is revolutionizing the world of virtual care. We are a clinician-led company bringing a combination of global medical practice and next generation technologies to transcend conventional boundaries of distance, time and training to serve patients and those who care for them.

To learn more about Hippo ThermalAlert™ or to arrange a product demonstration, please contact **1-877-hippo4u** or email **engage@myhippo.life**